








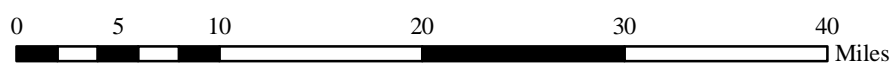


**LEGEND**

Management Prescriptions

-  Dolly Sods North/White Sulphur Addition
-  2.0 - Uneven-aged Management
-  3.0 - Even-aged Management
-  4.0 - Conifer Management
-  5.0 - Wilderness
-  6.1 - Remote Wildlife Habitat
-  6.2 - Backcountry Recreation
-  7.0 - Developed Recreation
-  8.0 - Special Areas

Note: Management prescriptions shown include only federal lands within the Forest proclamation boundary.

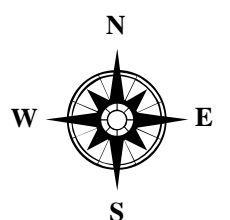


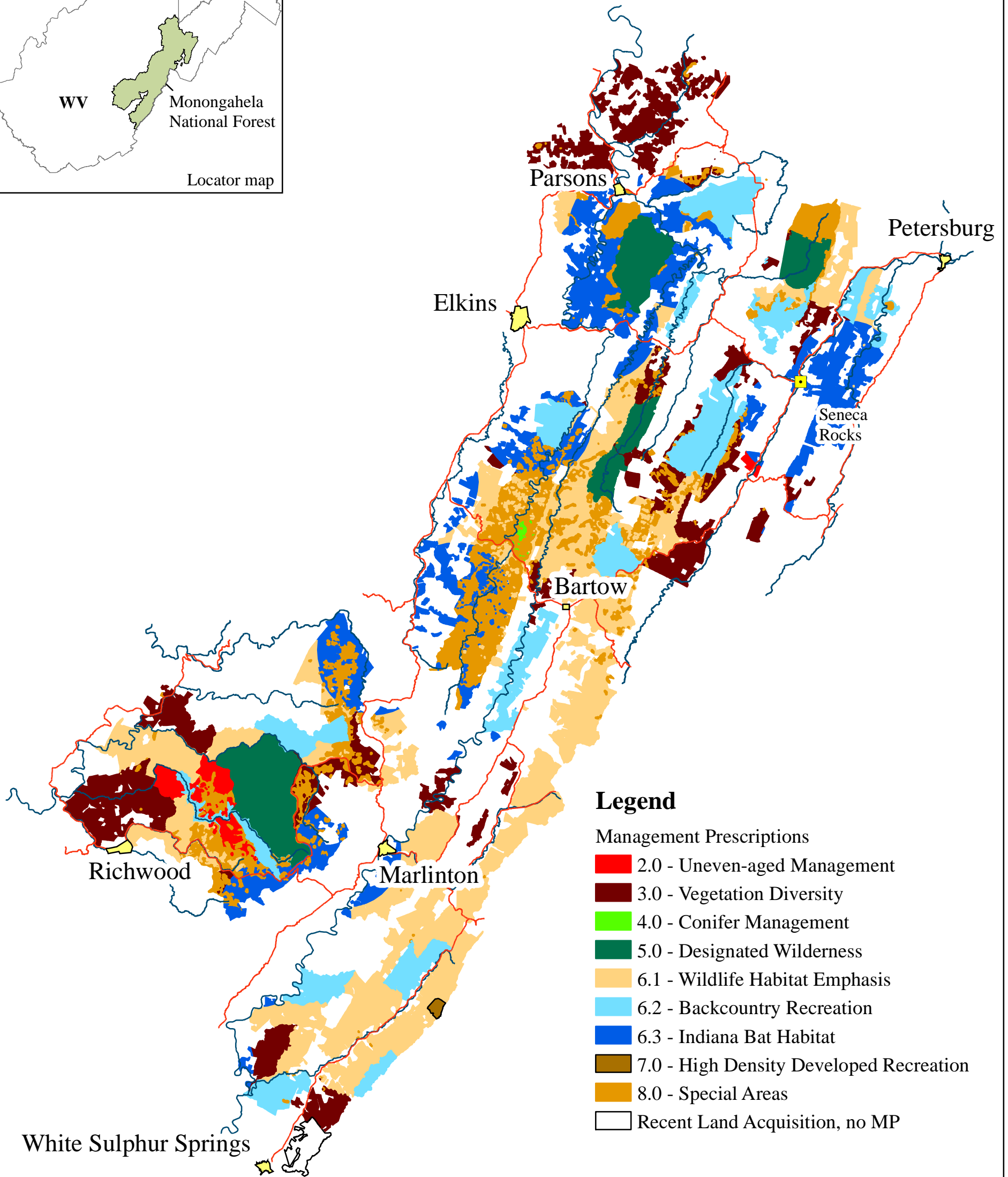
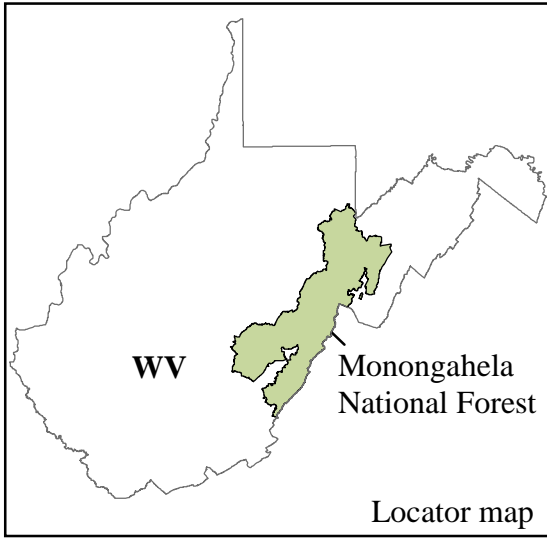
MNF GIS Staff  
UTM, Zone 17, NAD 83  
June 20, 2005

**1986 Forest Plan Management Prescriptions**

Forest Plan Revision - Monongahela National Forest

Original data were compiled from multiple source data and may not meet the U.S. National Map Accuracy Standard of the Office of Management and Budget. This map has no warranties as to its contents or accuracy.



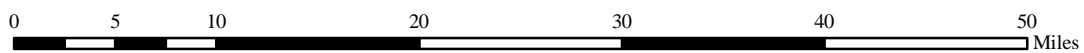


**Legend**

Management Prescriptions

- 2.0 - Uneven-aged Management
- 3.0 - Vegetation Diversity
- 4.0 - Conifer Management
- 5.0 - Designated Wilderness
- 6.1 - Wildlife Habitat Emphasis
- 6.2 - Backcountry Recreation
- 6.3 - Indiana Bat Habitat
- 7.0 - High Density Developed Recreation
- 8.0 - Special Areas
- Recent Land Acquisition, no MP

Note: Management prescriptions shown include only federal lands within the Forest proclamation boundary.

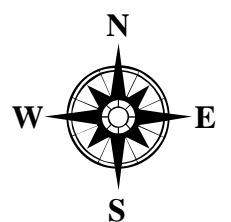


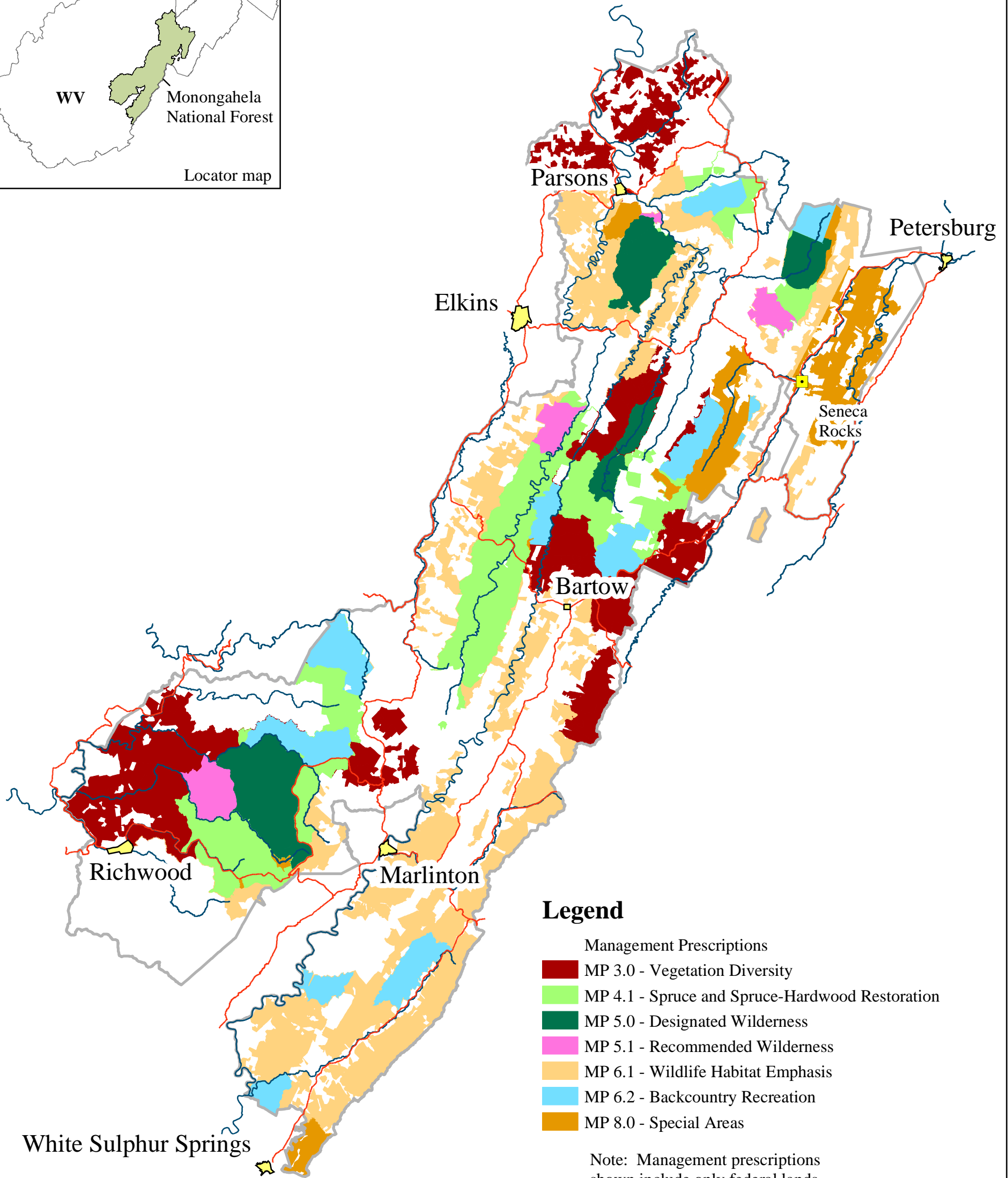
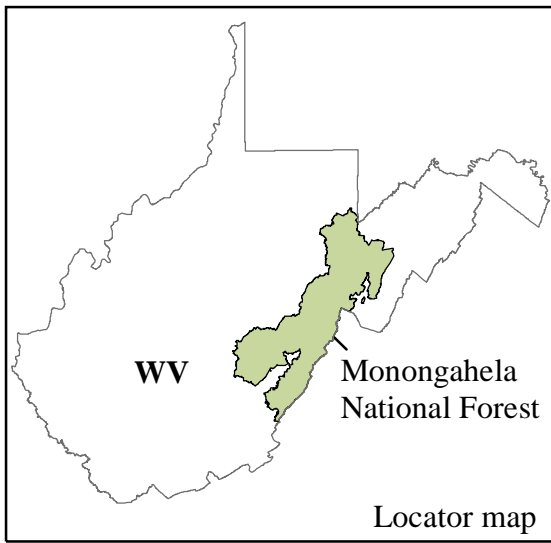
MNF GIS Staff  
UTM, Zone 17, NAD 27  
June 3, 2005

# Alternative 1

## Forest Plan Revision - Monongahela National Forest

Original data were compiled from multiple source data and may not meet the U.S. National Map Accuracy Standard of the Office of Management and Budget. This map has no warranties as to its contents or accuracy.

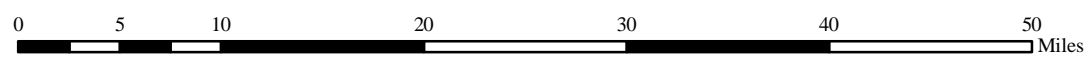




**Legend**

- Management Prescriptions
- MP 3.0 - Vegetation Diversity
- MP 4.1 - Spruce and Spruce-Hardwood Restoration
- MP 5.0 - Designated Wilderness
- MP 5.1 - Recommended Wilderness
- MP 6.1 - Wildlife Habitat Emphasis
- MP 6.2 - Backcountry Recreation
- MP 8.0 - Special Areas

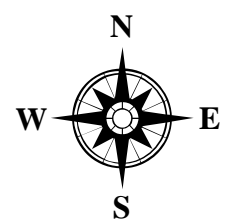
Note: Management prescriptions shown include only federal lands within the Forest proclamation boundary.



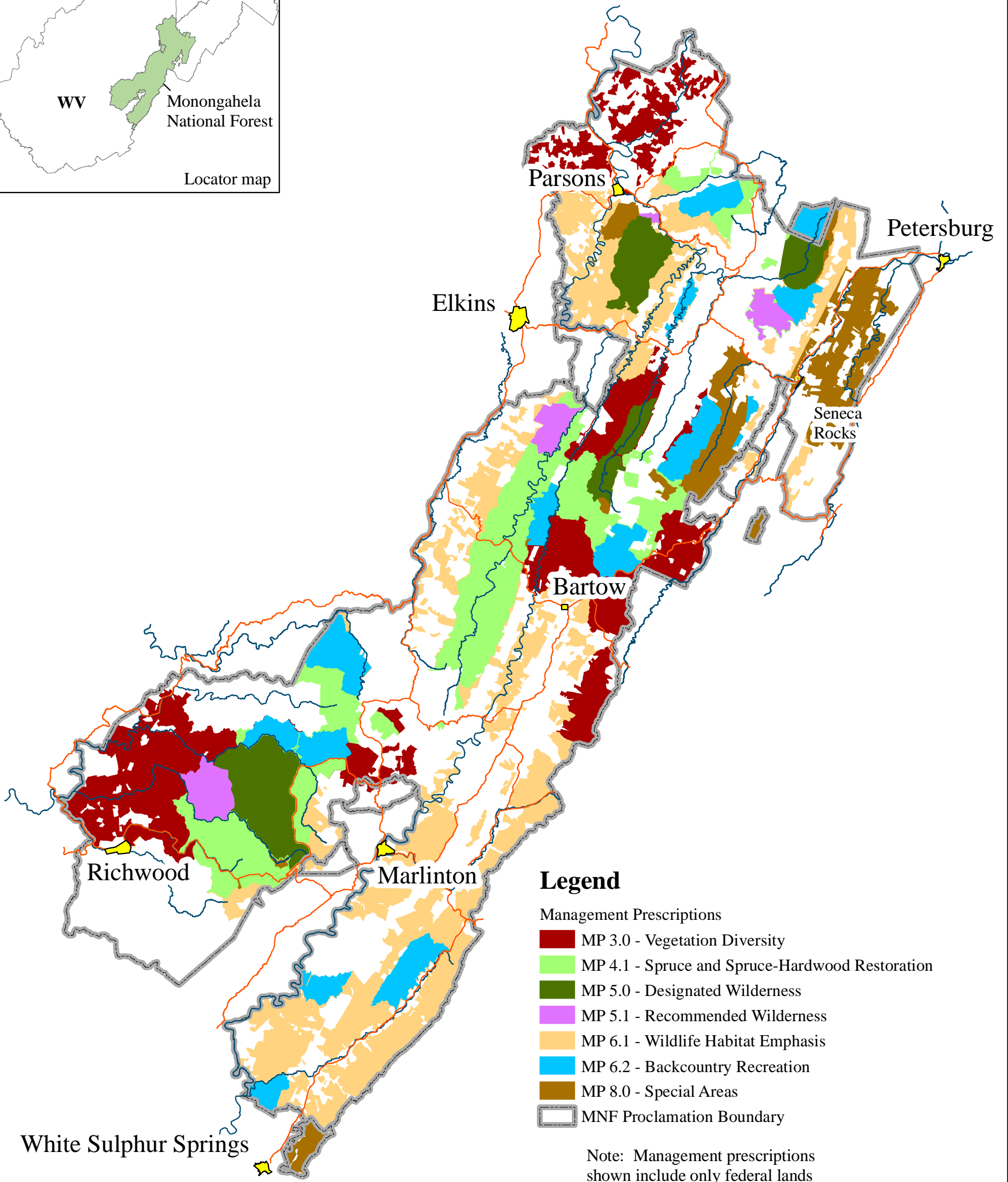
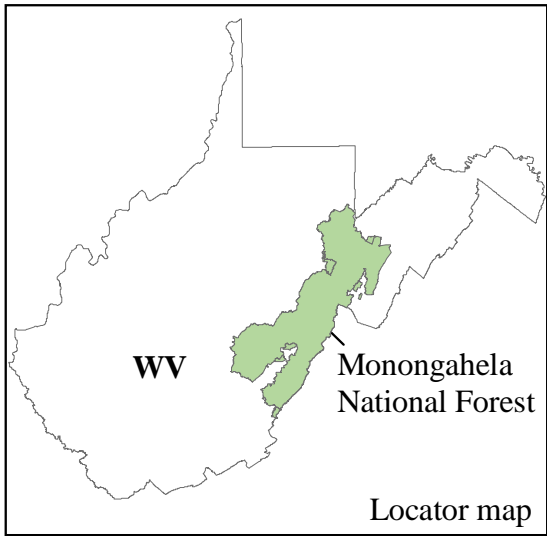
MNF GIS Staff  
UTM, Zone 17, NAD 27  
June 3, 2005

**Alternative 2**  
Forest Plan Revision - Monongahela National Forest

Original data were compiled from multiple source data and may not meet the U.S. National Map Accuracy Standard of the Office of Management and Budget. This map has no warranties as to its contents or accuracy.





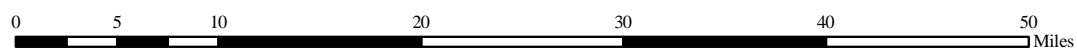


**Legend**

Management Prescriptions

- MP 3.0 - Vegetation Diversity
- MP 4.1 - Spruce and Spruce-Hardwood Restoration
- MP 5.0 - Designated Wilderness
- MP 5.1 - Recommended Wilderness
- MP 6.1 - Wildlife Habitat Emphasis
- MP 6.2 - Backcountry Recreation
- MP 8.0 - Special Areas
- MNF Proclamation Boundary

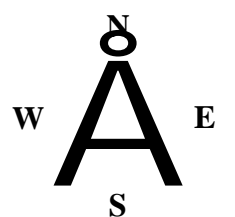
Note: Management prescriptions shown include only federal lands within the Forest proclamation boundary.



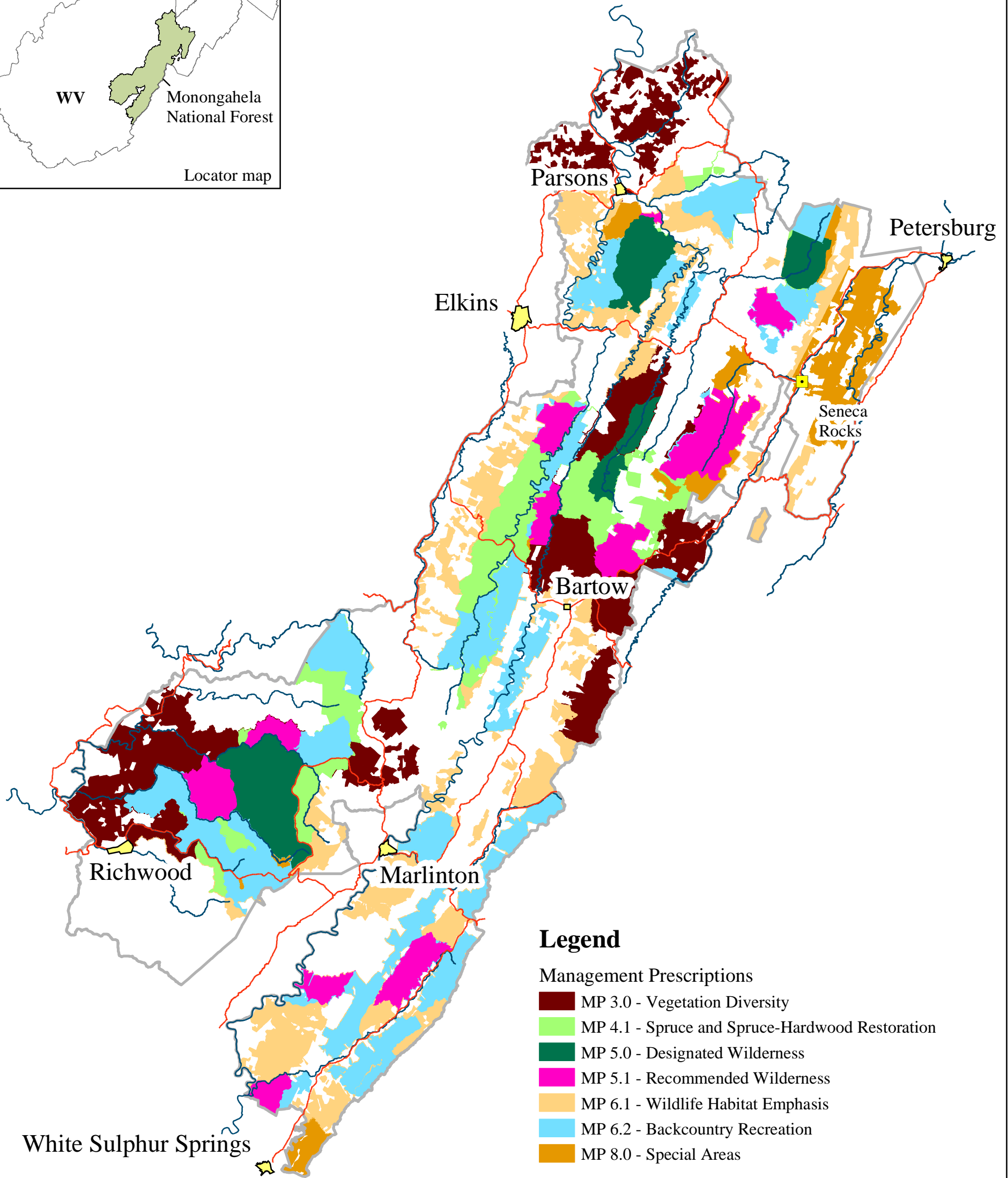
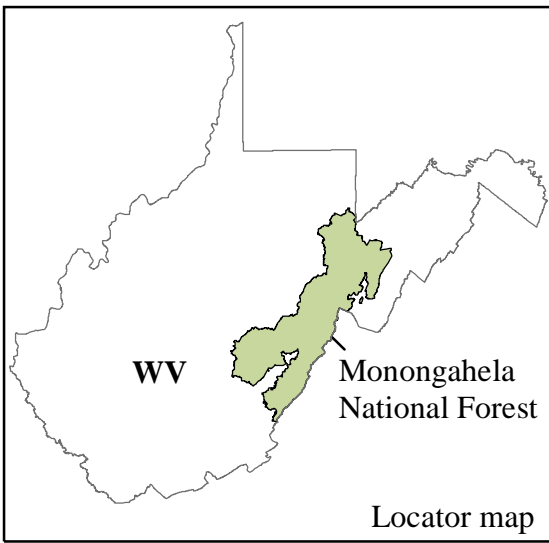
MNF GIS Staff  
UTM, Zone 17, NAD 27  
June 27, 2006

**Alternative 2 - Modified**  
Forest Plan Revision - Monongahela National Forest

Original data were compiled from multiple source data and may not meet the U.S. National Map Accuracy Standard of the Office of Management and Budget. This map has no warranties as to its contents or accuracy.





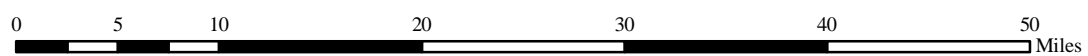


**Legend**

Management Prescriptions

- MP 3.0 - Vegetation Diversity
- MP 4.1 - Spruce and Spruce-Hardwood Restoration
- MP 5.0 - Designated Wilderness
- MP 5.1 - Recommended Wilderness
- MP 6.1 - Wildlife Habitat Emphasis
- MP 6.2 - Backcountry Recreation
- MP 8.0 - Special Areas

Note: Management prescriptions shown include only federal lands within the Forest proclamation boundary.



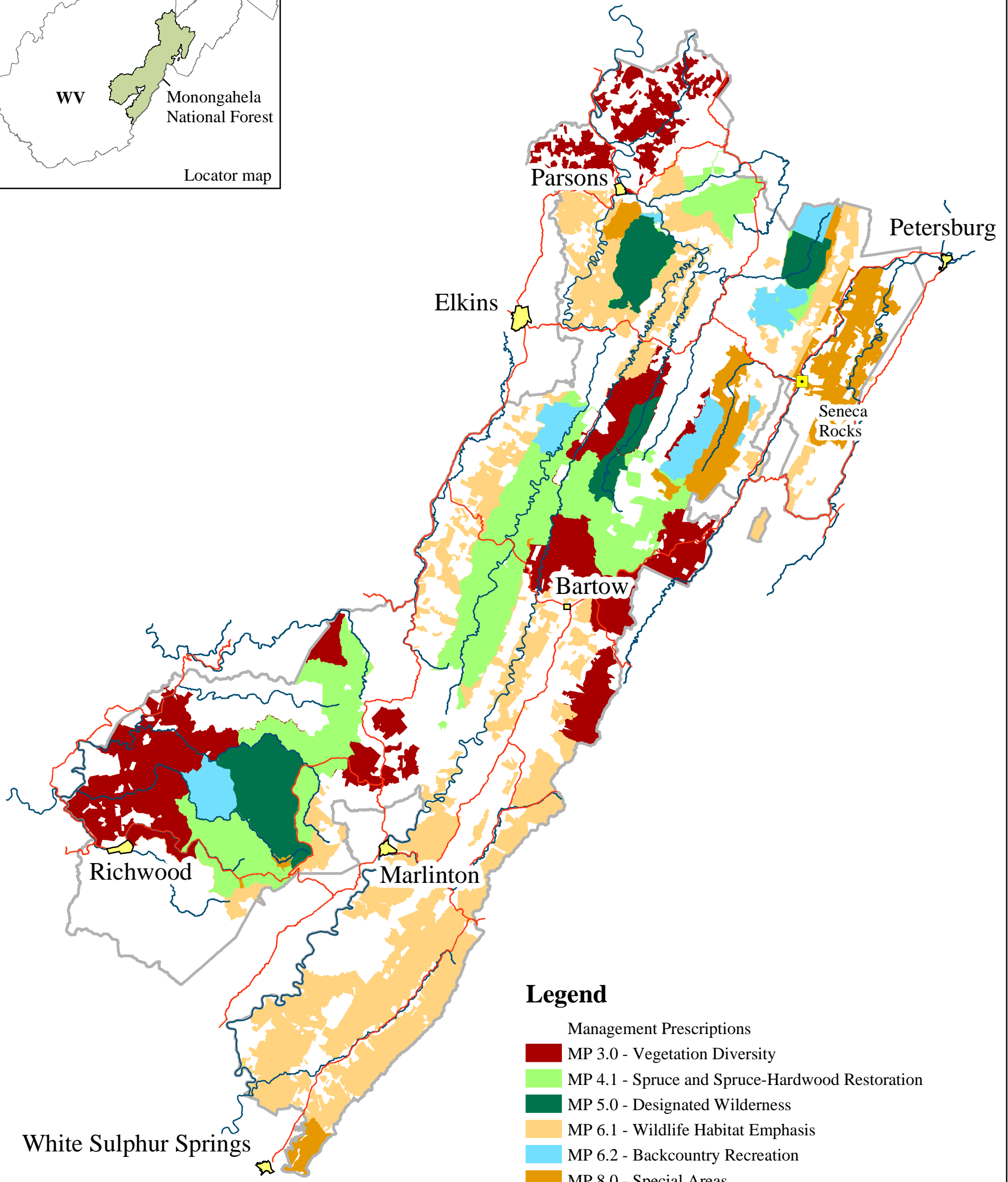
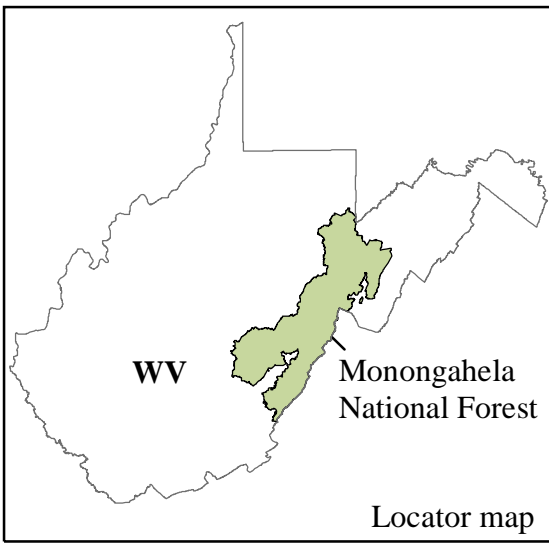
MNF GIS Staff  
UTM, Zone 17, NAD 27  
June 3, 2005

**Alternative 3**

**Forest Plan Revision - Monongahela National Forest**

Original data were compiled from multiple source data and may not meet the U.S. National Map Accuracy Standard of the Office of Management and Budget. This map has no warranties as to its contents or accuracy.

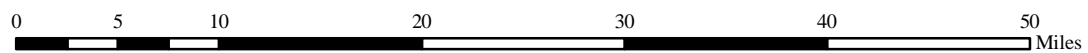




**Legend**

- Management Prescriptions
- MP 3.0 - Vegetation Diversity
- MP 4.1 - Spruce and Spruce-Hardwood Restoration
- MP 5.0 - Designated Wilderness
- MP 6.1 - Wildlife Habitat Emphasis
- MP 6.2 - Backcountry Recreation
- MP 8.0 - Special Areas

Note: Management prescriptions shown include only federal lands within the Forest proclamation boundary.

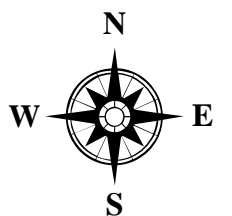


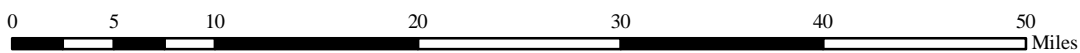
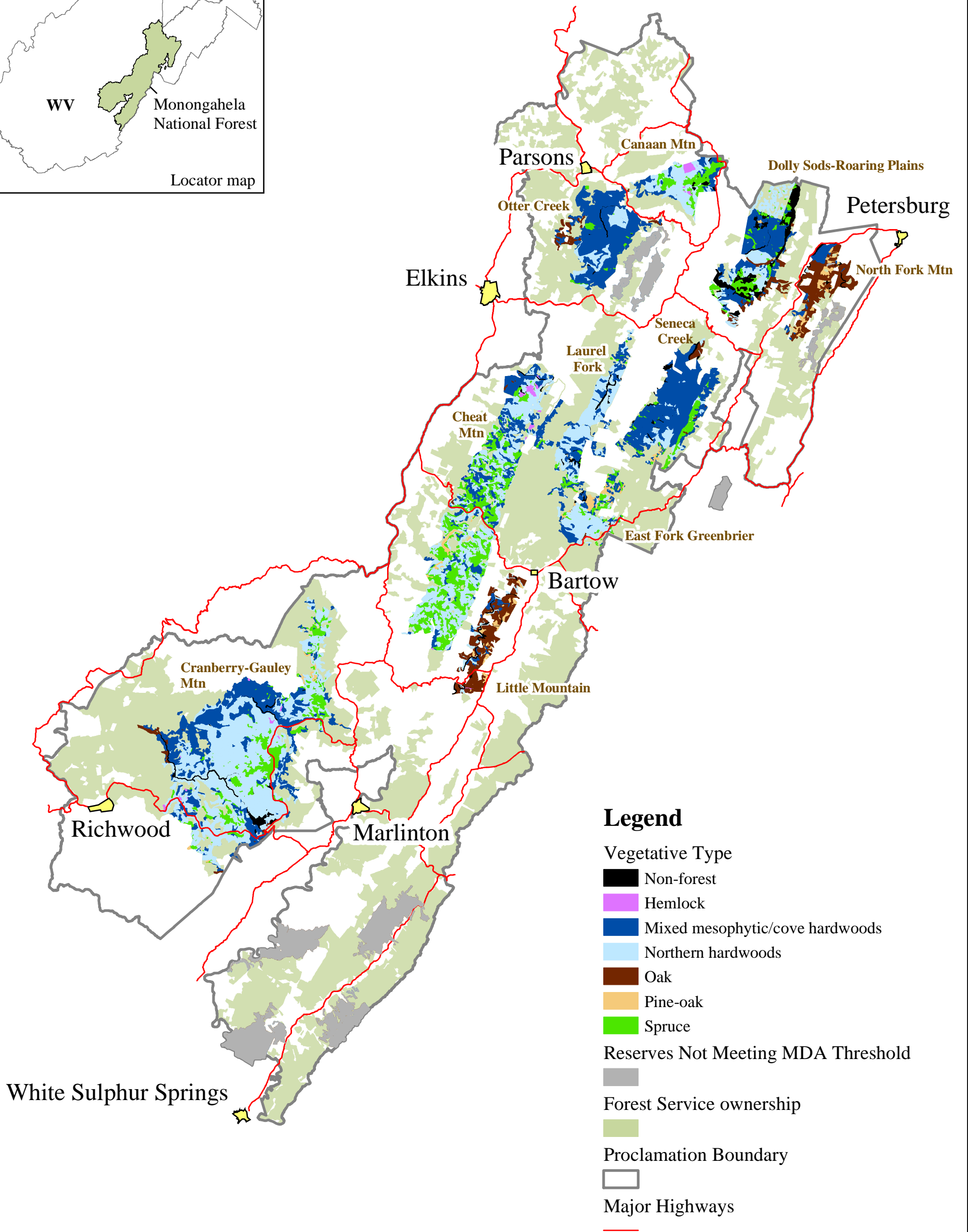
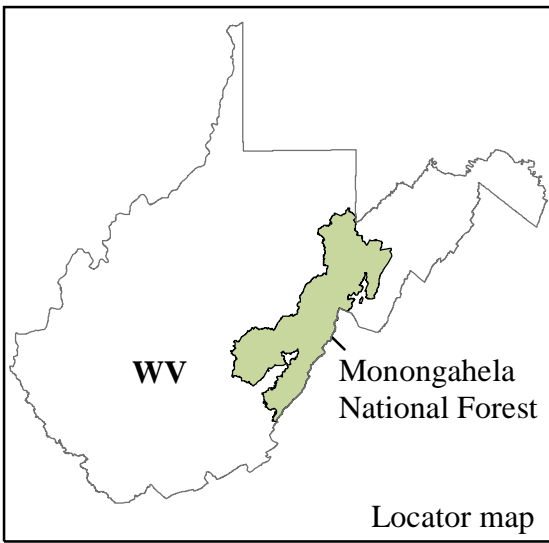
MNF GIS Staff  
UTM, Zone 17, NAD 27  
June 3, 2005

**Alternative 4**

**Forest Plan Revision - Monongahela National Forest**

Original data were compiled from multiple source data and may not meet the U.S. National Map Accuracy Standard of the Office of Management and Budget. This map has no warranties as to its contents or accuracy.





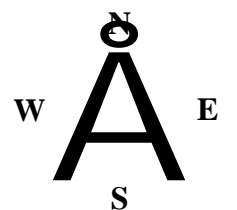
# Minimum Dynamic Area Reserves Alternative 1

## Forest Plan Revision - Monongahela National Forest

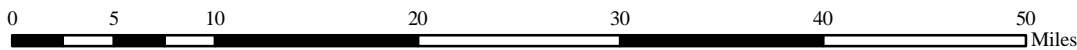
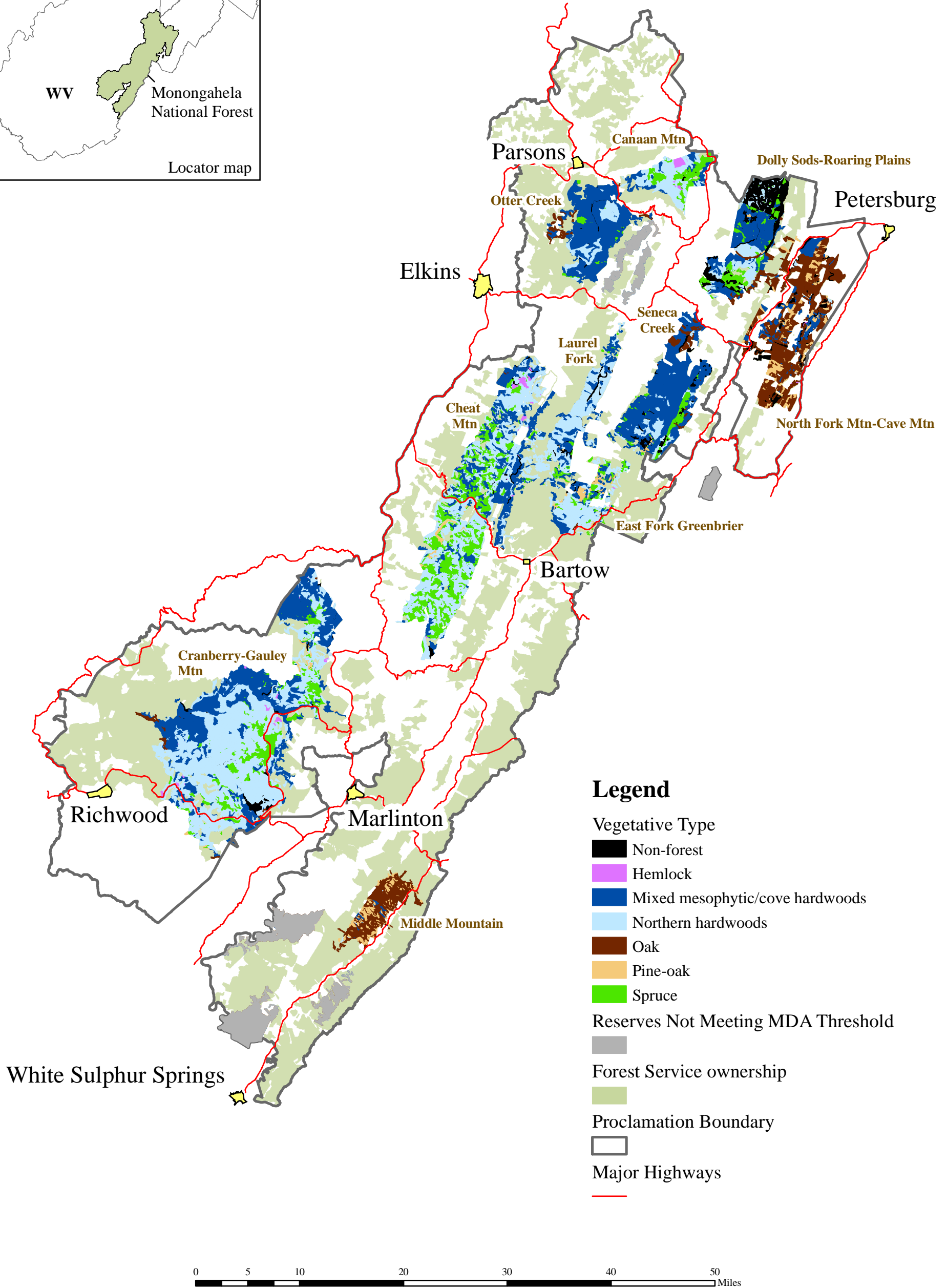
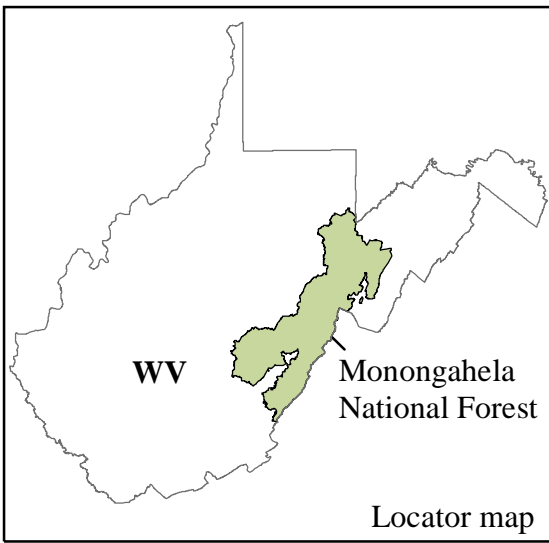
Original data were compiled from multiple source data and may not meet the U.S. National Map Accuracy Standard of the Office of Management and Budget. This map has no warranties as to its contents or accuracy.



MNF GIS Staff  
UTM, Zone 17, NAD 27  
June 3, 2005







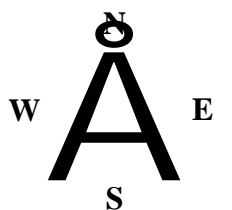
## Minimum Dynamic Area Reserves Alternative 2

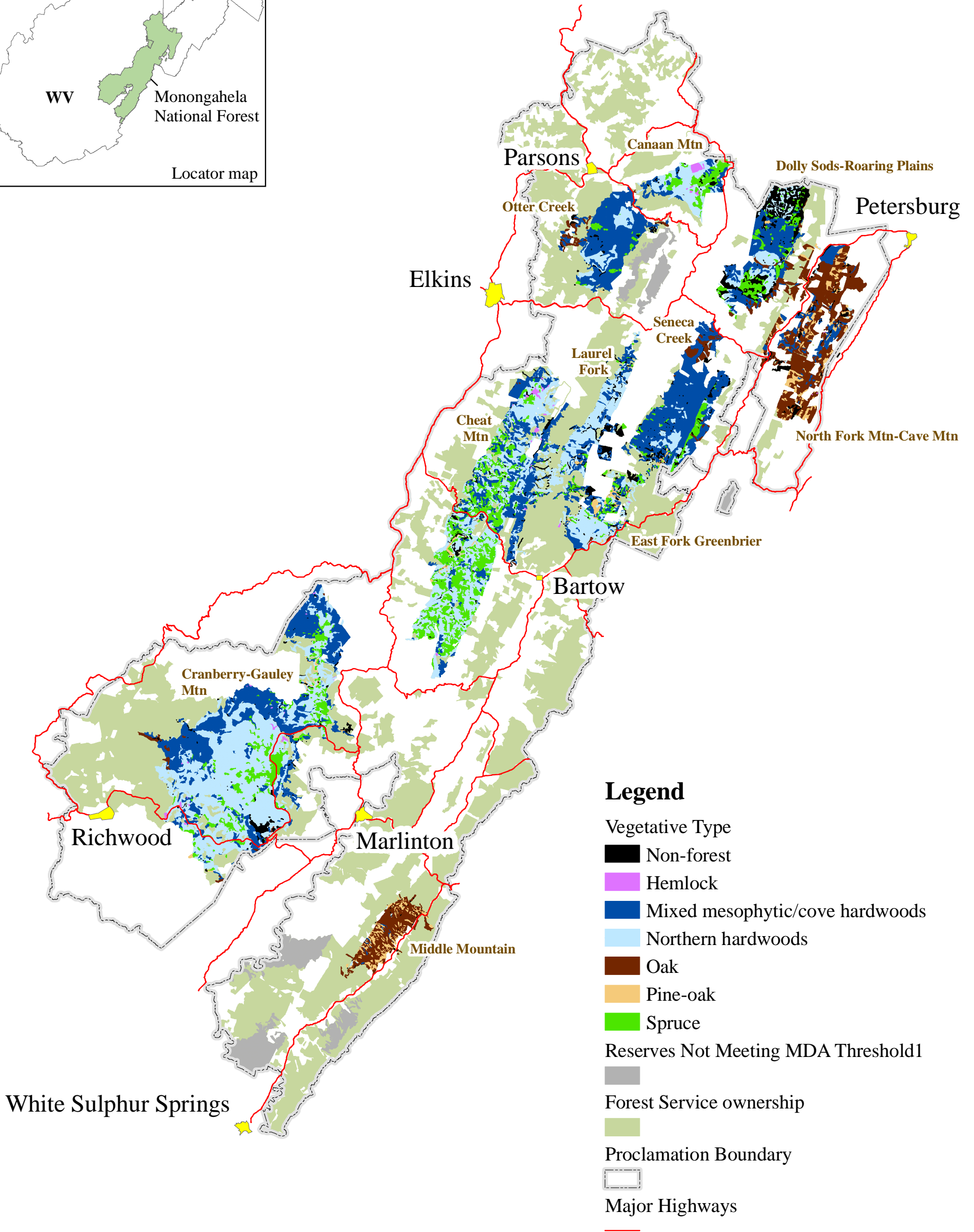
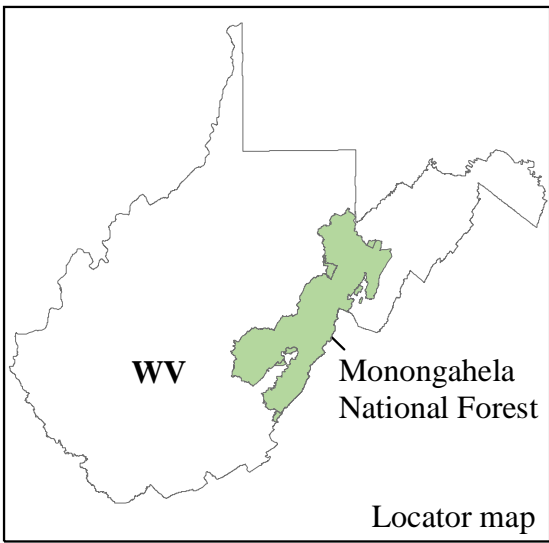
### Forest Plan Revision - Monongahela National Forest

Original data were compiled from multiple source data and may not meet the U.S. National Map Accuracy Standard of the Office of Management and Budget. This map has no warranties as to its contents or accuracy.



MNF GIS Staff  
UTM, Zone 17, NAD 27  
June 3, 2005





0 5 10 20 30 40 50 Miles

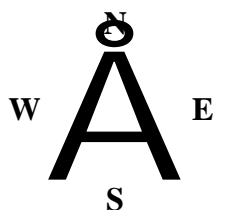
## Minimum Dynamic Area Reserves Alternative 2 - Modified

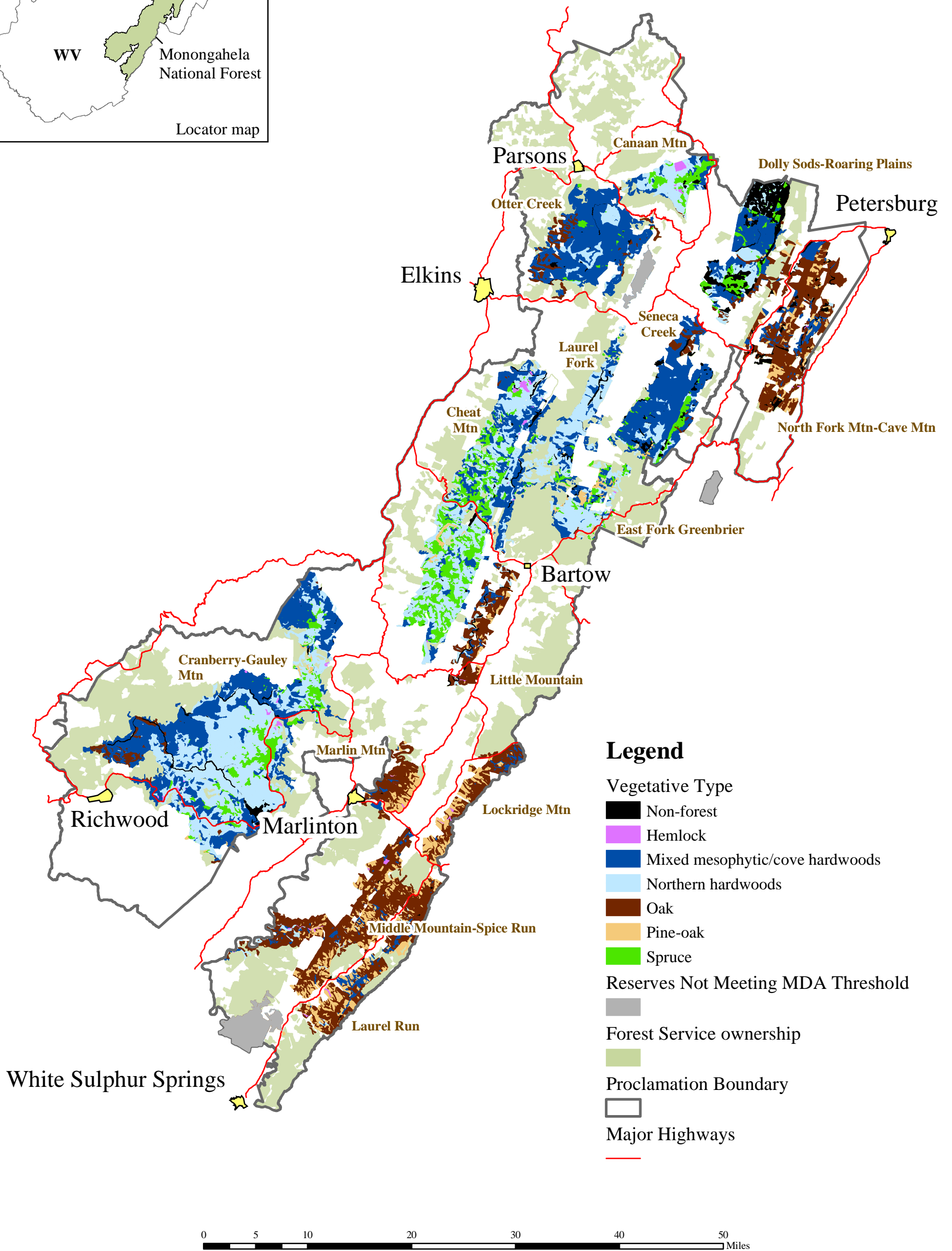
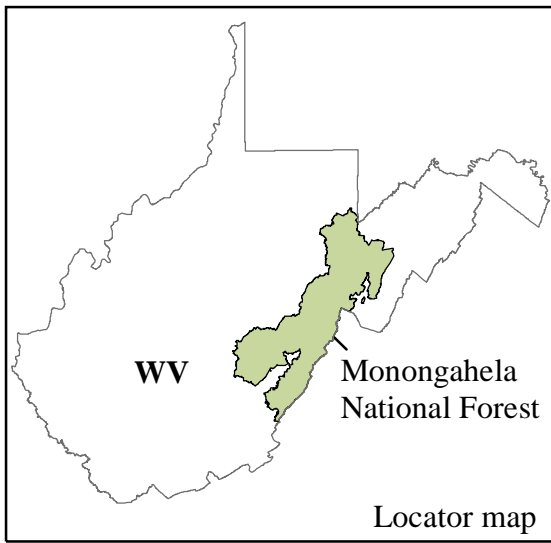
Forest Plan Revision - Monongahela National Forest

Original data were compiled from multiple source data and may not meet the U.S. National Map Accuracy Standard of the Office of Management and Budget. This map has no warranties as to its contents or accuracy.



MNF GIS Staff  
UTM, Zone 17, NAD 27  
June 30, 2006



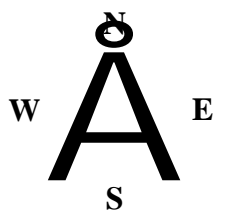


MNF GIS Staff  
UTM, Zone 17, NAD 27  
June 3, 2005

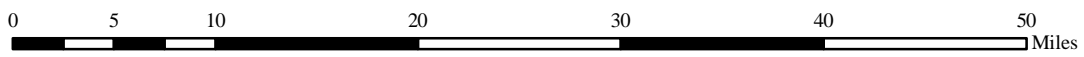
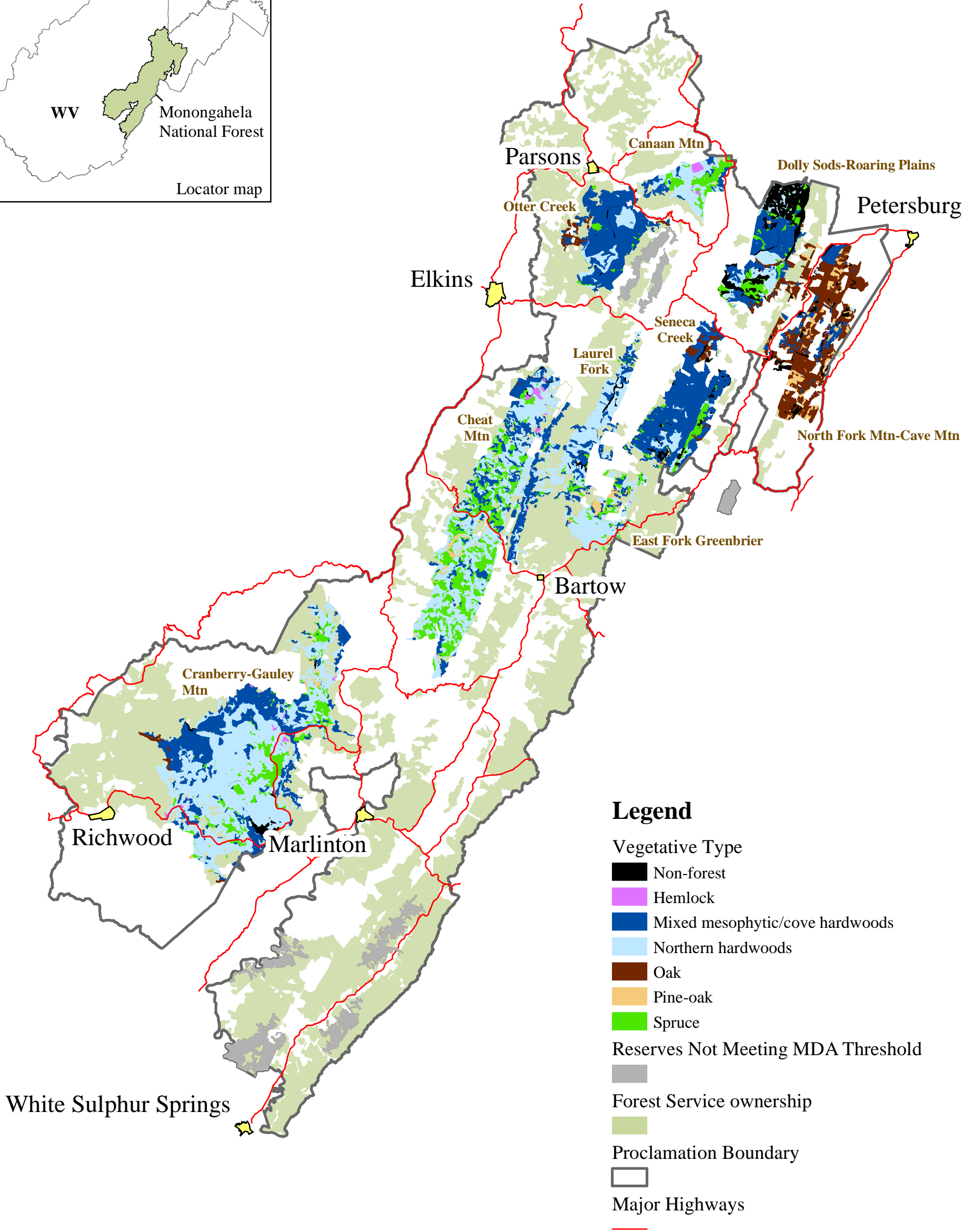
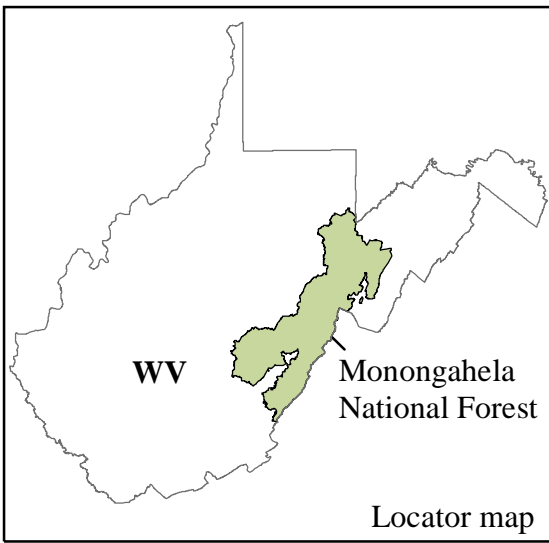
## Minimum Dynamic Area Reserves Alternative 3

### Forest Plan Revision - Monongahela National Forest

Original data were compiled from multiple source data and may not meet the U.S. National Map Accuracy Standard of the Office of Management and Budget. This map has no warranties as to its contents or accuracy.







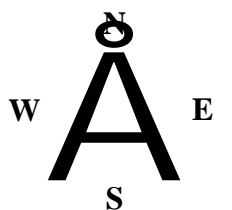
## Minimum Dynamic Area Reserves Alternative 4

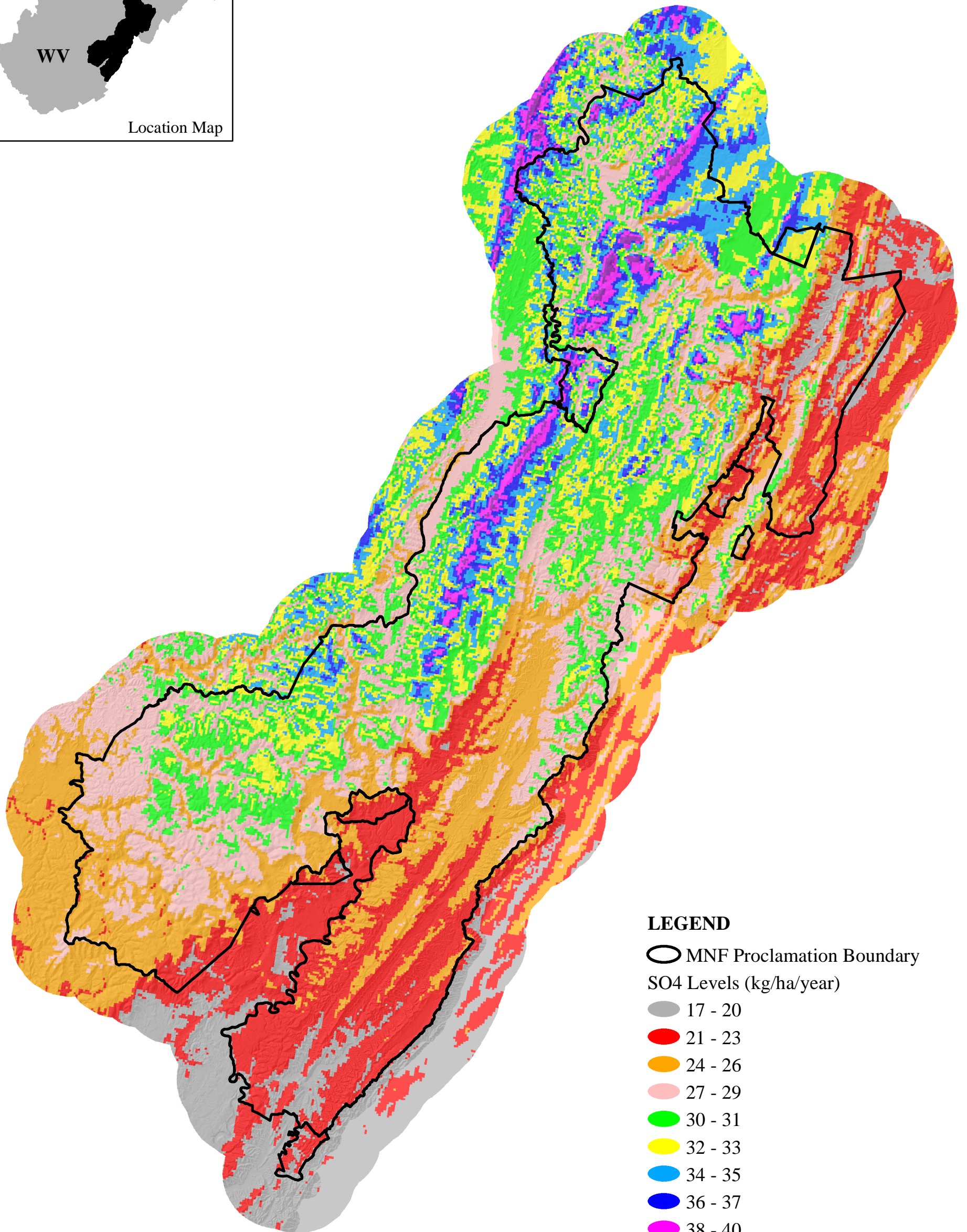
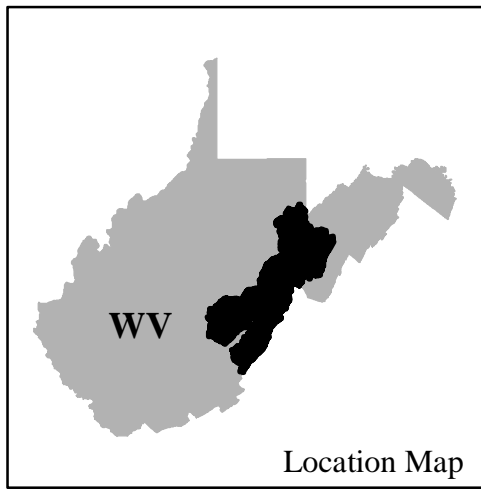
### Forest Plan Revision - Monongahela National Forest

Original data were compiled from multiple source data and may not meet the U.S. National Map Accuracy Standard of the Office of Management and Budget. This map has no warranties as to its contents or accuracy.



MNF GIS Staff  
UTM, Zone 17, NAD 27  
June 3, 2005





**LEGEND**

○ MNF Proclamation Boundary

SO<sub>4</sub> Levels (kg/ha/year)

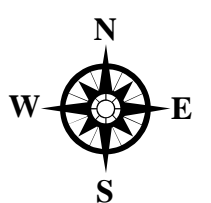
- 17 - 20
- 21 - 23
- 24 - 26
- 27 - 29
- 30 - 31
- 32 - 33
- 34 - 35
- 36 - 37
- 38 - 40
- 41 - 45



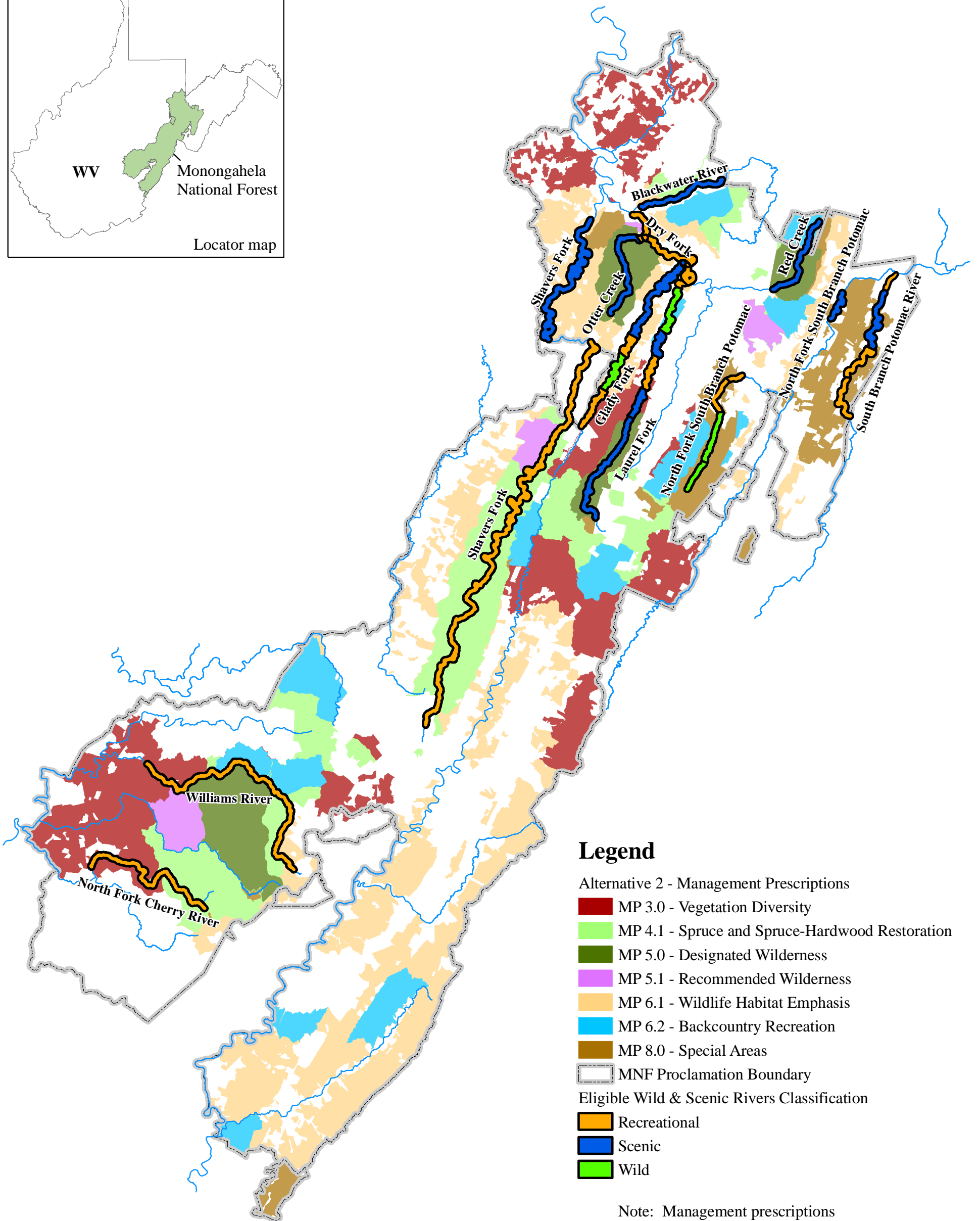
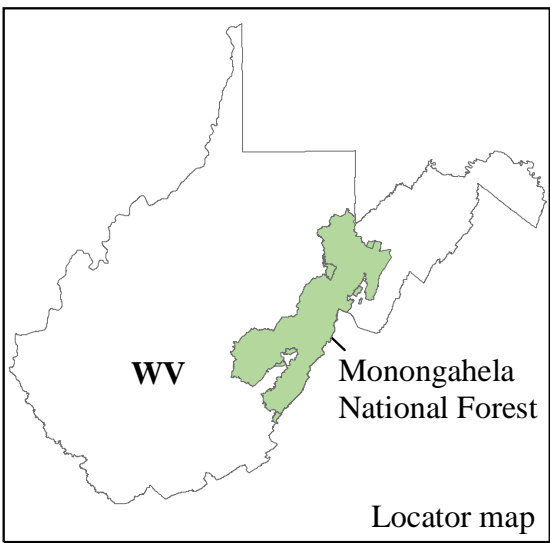
MNF GIS Staff  
 UTM, Zone 17, NAD 83  
 June 3, 2005

**Sulfate (SO<sub>4</sub>) Levels**  
 Forest Plan Revision - Monongahela National Forest

Original data were compiled from multiple source data and may not meet the U.S. National Map Accuracy Standard of the Office of Management and Budget. This map has no warranties as to its contents or accuracy.



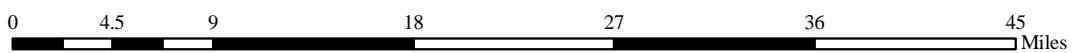




**Legend**

- Alternative 2 - Management Prescriptions
- MP 3.0 - Vegetation Diversity
  - MP 4.1 - Spruce and Spruce-Hardwood Restoration
  - MP 5.0 - Designated Wilderness
  - MP 5.1 - Recommended Wilderness
  - MP 6.1 - Wildlife Habitat Emphasis
  - MP 6.2 - Backcountry Recreation
  - MP 8.0 - Special Areas
- MNF Proclamation Boundary
- Eligible Wild & Scenic Rivers Classification
- Recreational
  - Scenic
  - Wild

Note: Management prescriptions shown include only federal lands within the Forest proclamation boundary.



MNF GIS Staff  
UTM, Zone 17, NAD 27  
June 27, 2006

**Eligible WSR Segments by Classification**

**Forest Plan Revision - Monongahela National Forest**

Original data were compiled from multiple source data and may not meet the U.S. National Map Accuracy Standard of the Office of Management and Budget. This map has no warranties as to its contents or accuracy.

